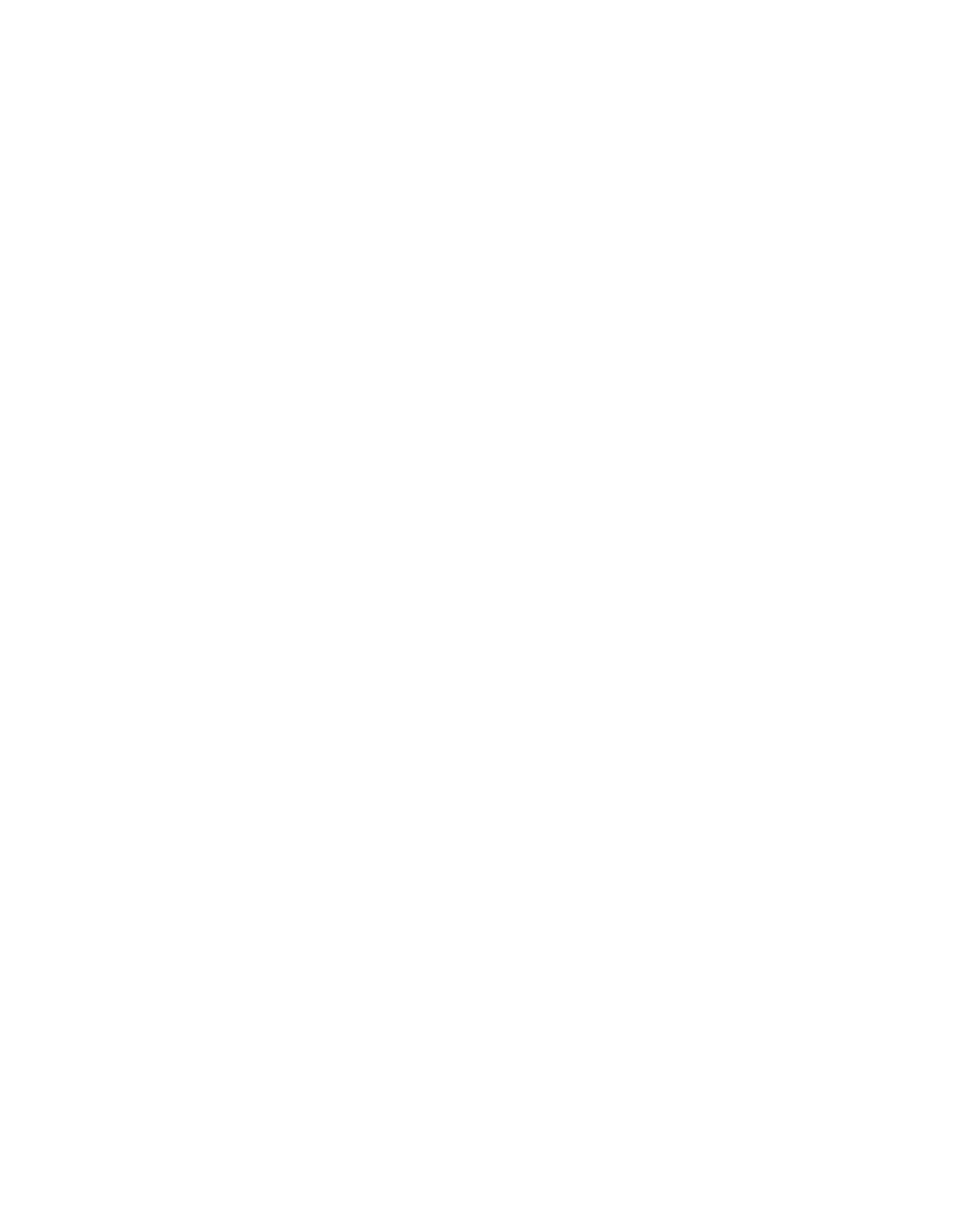


The  
Sculpture of  
David Hayes











*Leaf Figure* 64½" × 68" × 51½" 1975



*Semi Screen* 91" × 58" × 43" 1987



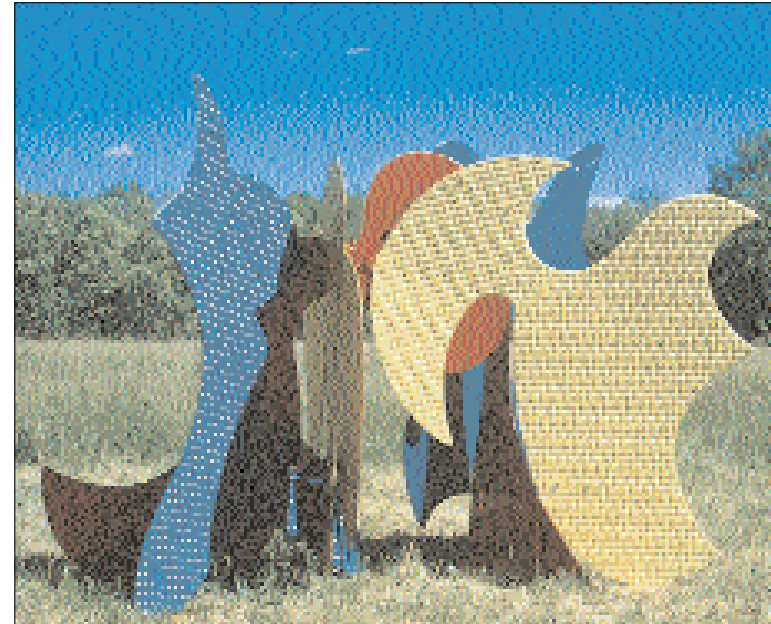
*Horned Field Figure* 73" × 42" × 44" 1992



*Painted Metal Relief #9* 1984  
38½" × 26" × 2"



*Vertical Diamond #10* 1983  
92" × 24" × 24"



*Gladiator* 74" × 53" × 104" 1989



*Armored Animal* 1985  
41" × 40" × 32"



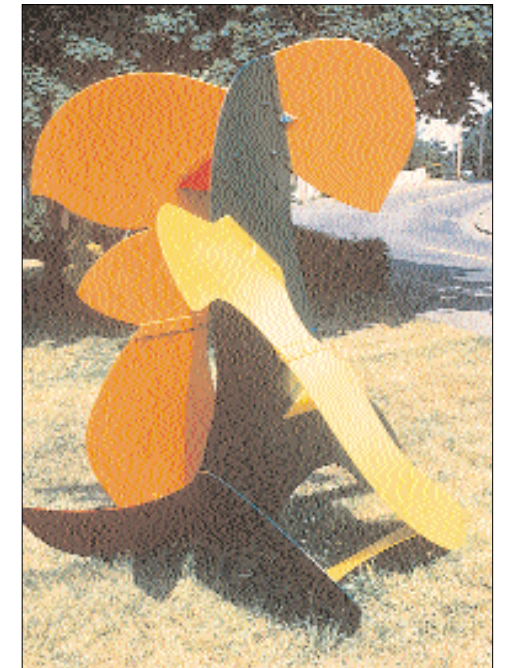
*Inchworm* 55" × 71" × 83" 1971



*Inchworm #2* 81" × 36" × 75" 1989



*Humpback* 64½" × 68" × 51½" 1987



*Cygne* 96" × 90½" × 97" 1991





*Screen Sculpture #48* 1993  
95½" × 66½" × 45½"



*Screen Sculpture #59* 1994  
78" × 81" × 29"



*Vertical Motif #5* 1976  
115" × 35" × 43"



*Screen Sculpture #83* 73" × 58" × 34" 1997



*Model for Sculpture* 1987



*Screen Sculpture #26* 121" × 71" × 36" 1987



*Model for Sculpture* 1990

## DAVID HAYES

David Hayes was born in Hartford, Connecticut and received an A.B. degree from the University of Notre Dame in 1953, and a M.F.A. degree from Indiana University in 1955 where he studied with David Smith. He has received a post-doctoral Fulbright award, a Guggenheim Fellowship, and a grant from the National Institute of Arts and Letters. He has been appointed Visiting Artist at the Carpenter Art Center, Harvard University, and has represented the United States at the Forma Viva sculpture symposium in Portoroz, Yugoslavia. He has served three years on the National Screening Committee for the Fulbright-Hays awards in sculpture and was the subject of documentary films in 1991 and 1998 on Connecticut Public Television. He has had 93 one-man shows and is included in the collections of over 60 major museums. He resides in Coventry, Connecticut.

### PUBLIC COLLECTIONS

Museum of Modern Art, New York	Everson Museum of Art; Syracuse, New York	Hunter Museum of Art; Chattanooga, Tennessee
Solomon R. Guggenheim Museum, New York	Dade County Art Collection; Miami, Florida	Albertus Magnus College; New Haven, Connecticut
Addison Gallery of American Art; Andover, Massachusetts	DeCordova Museum; Lincoln, Massachusetts	Wilbraham and Monson Academy; Wilbraham, Massachusetts
Currier Gallery of Art; Manchester, New Hampshire	Williams College Museum of Art; Williamstown, Massachusetts	Westmoreland County Museum of Art; Greensburg, Pennsylvania
Musée des Arts Décoratifs, Paris	George Washington University; Washington, D. C.	Wondriska & Russo Associates; Farmington, Connecticut
Detroit Art Institute; Detroit, Michigan	New Britain Museum of American Art; New Britain, Connecticut	The Woodlands, Texas
Museum of Fine Arts; Houston, Texas	Brooklyn Museum; Brooklyn, New York	Philbrook Art Center; Tulsa, Oklahoma
University of Michigan; Ann Arbor, Michigan	Price, Waterhouse, Inc.; Hartford, Connecticut	Pfeizer, Inc.; New York
Arizona State University; Tempe, Arizona	Russell, Gibson, Von Dolen, Inc.; Hartford, Connecticut	Pepperridge Farms, Inc.; New Haven, Connecticut
Carnegie Institute; Pittsburgh, Pennsylvania	Thiokol Corporation; Newtown, Pennsylvania	Olin Corporation; Cheshire, Connecticut
Wadsworth Atheneum; Hartford, Connecticut	University Art Gallery, State University of New York; Albany, New York	Manchester Community College; Manchester, Connecticut
Elmira College; Elmira, New York	Lynch Motors, Manchester, Connecticut	Hartford Public Library; Hartford, Connecticut
Brockton Art Center, Fuller Memorial; Brockton, Massachusetts	Housatonic Museum of Art; Bridgeport, Connecticut	BKM, Inc.; East Hartford, Connecticut
Ringling Museum of Art; Sarasota, Florida	Boca Raton Museum; Boca Raton, Florida	Western Michigan University; Kalamazoo, Michigan
Fleming Museum, University of Vermont; Burlington, Vermont	Museum of Fine Arts; Springfield, Massachusetts	Hollister Corporation; Libertyville, Illinois
First National Bank of Chicago; Chicago, Illinois	Wichita State University; Wichita, Kansas	Hartford Art School; West Hartford, Connecticut
De Porceleyne Fles; Delft, Holland	Gund Hall, Harvard University; Cambridge, Massachusetts	University of Hartford; West Hartford, Connecticut
William Benton Museum; Storrs, Connecticut	The Norton Company; Worcester, Massachusetts	Mitchner Museum; Doylestown, Pennsylvania
Columbus Gallery of Fine Arts; Columbus, Ohio	National Trust for Historic Preservation, Nelson Rockefeller Collection; Tarrytown, New York	Gerwun Jewish Heritage Foundation, New Jersey
University of Notre Dame; Notre Dame, Indiana	Harry Guggenheim Collection, Nassau County Museum; Sands Point, New York	University of Connecticut Health Center; Farmington, Connecticut
Michael Schiavone and Sons; New Haven, Connecticut	Fitchburg Art Museum; Fitchburg, Massachusetts	Westminster School; Simsbury, Connecticut
Indiana University; Bloomington, Indiana	Ohio Wesleyan University; Delaware, Ohio	Hartwood Acres; Pittsburgh, Pennsylvania
National Museum of American Art; Washington, D. C.		University of New Haven; West Haven, Connecticut
Struktur 68NV; The Hague, Holland		Gulf Coast Museum of Art; Largo, Florida
Boston Public Library; Boston, Massachusetts		Picker Art Gallery, Colgate University; Hamilton, New York
Dartmouth College; Hanover, New Hampshire		Nicotra Group; Staten Island, New York

### Contact information:

John Hayes

P.O. Box 509, Coventry, Connecticut 06238

Telephone: (860) 742-2730 or (941) 949-1435 · Fax: (860) 742-7687

*On the overleaf:*  
*Arch, 1991*  
*82" x 61" x 66"*

*Front and back*  
*cover photo credits:*  
*Michael Sundra*